



1 Dovetree Close, Walton-Le-Dale, PR5 4NN

£315,000

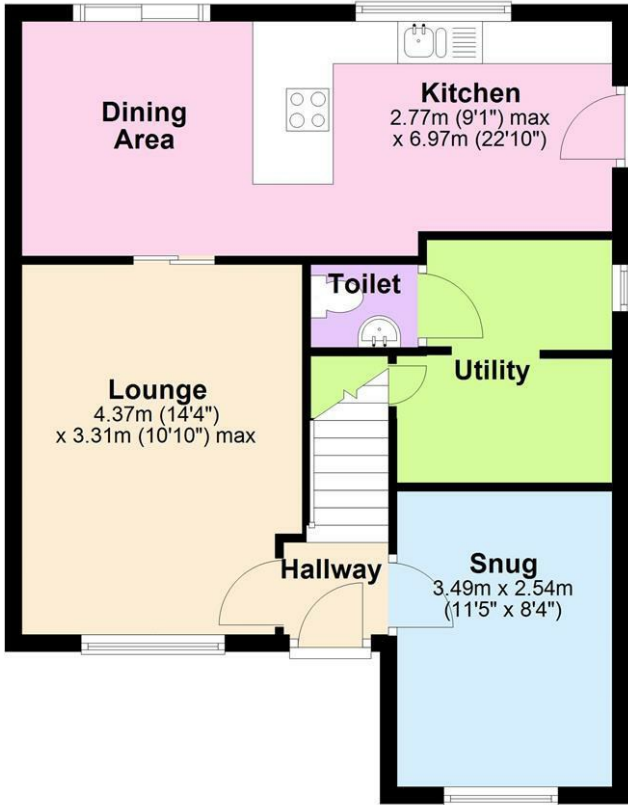
Nestled on a spacious corner plot, this beautifully presented four-bedroom detached home offers generous living space and modern comforts, making it ideal for families. With a well-balanced layout and stylish interior, this property provides both functionality and charm.

Inside, the home features a welcoming entrance hall leading to a bright lounge and a separate snug, perfect for relaxation or a home office. The open-plan kitchen and dining area create a sociable space, complemented by a large utility room and a convenient downstairs toilet. Upstairs, four well-proportioned bedrooms include a superb master with an en-suite, while the family bathroom serves the remaining rooms. The property is in excellent condition, with contemporary finishes throughout.

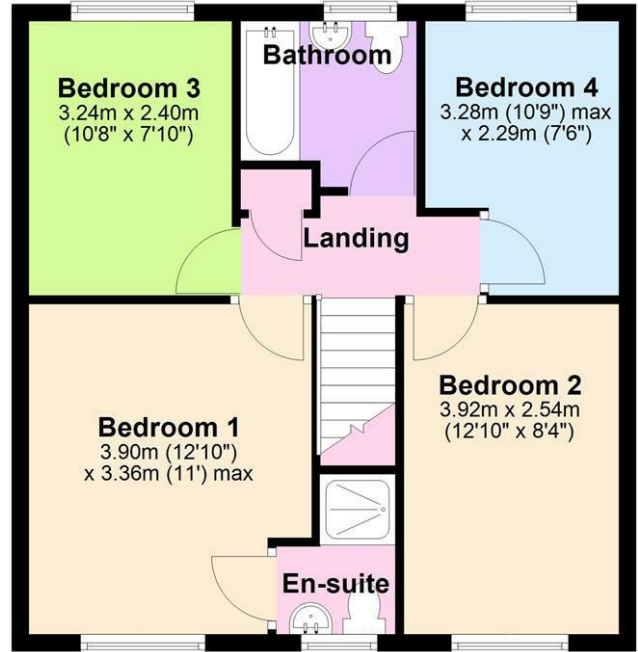
Outside, the sizeable plot provides ample garden space, ideal for children, entertaining, or simply unwinding. With its superb location and practical layout, this home is perfect for family living. If you have any questions or would like to arrange a viewing, please get in touch.

Floor Plan

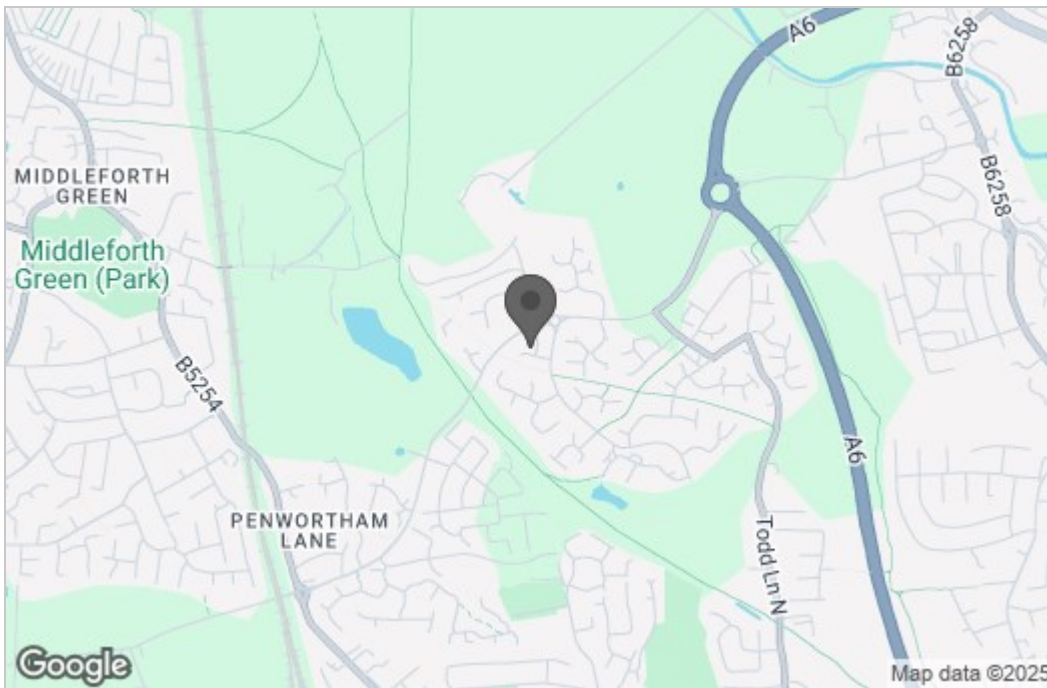
Ground Floor



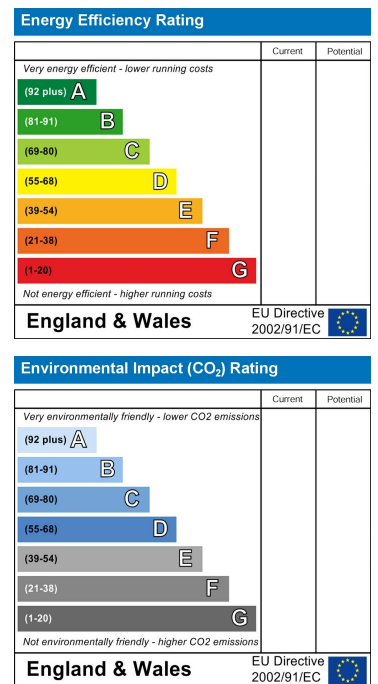
First Floor



Area Map



Energy Efficiency Graph



These particulars, whilst believed to be accurate are set out as a general outline only for guidance and do not constitute any part of an offer or contract. Intending purchasers should not rely on them as statements of representation of fact, but must satisfy themselves by inspection or otherwise as to their accuracy. No person in this firm's employment has the authority to make or give any representation or warranty in respect of the property.